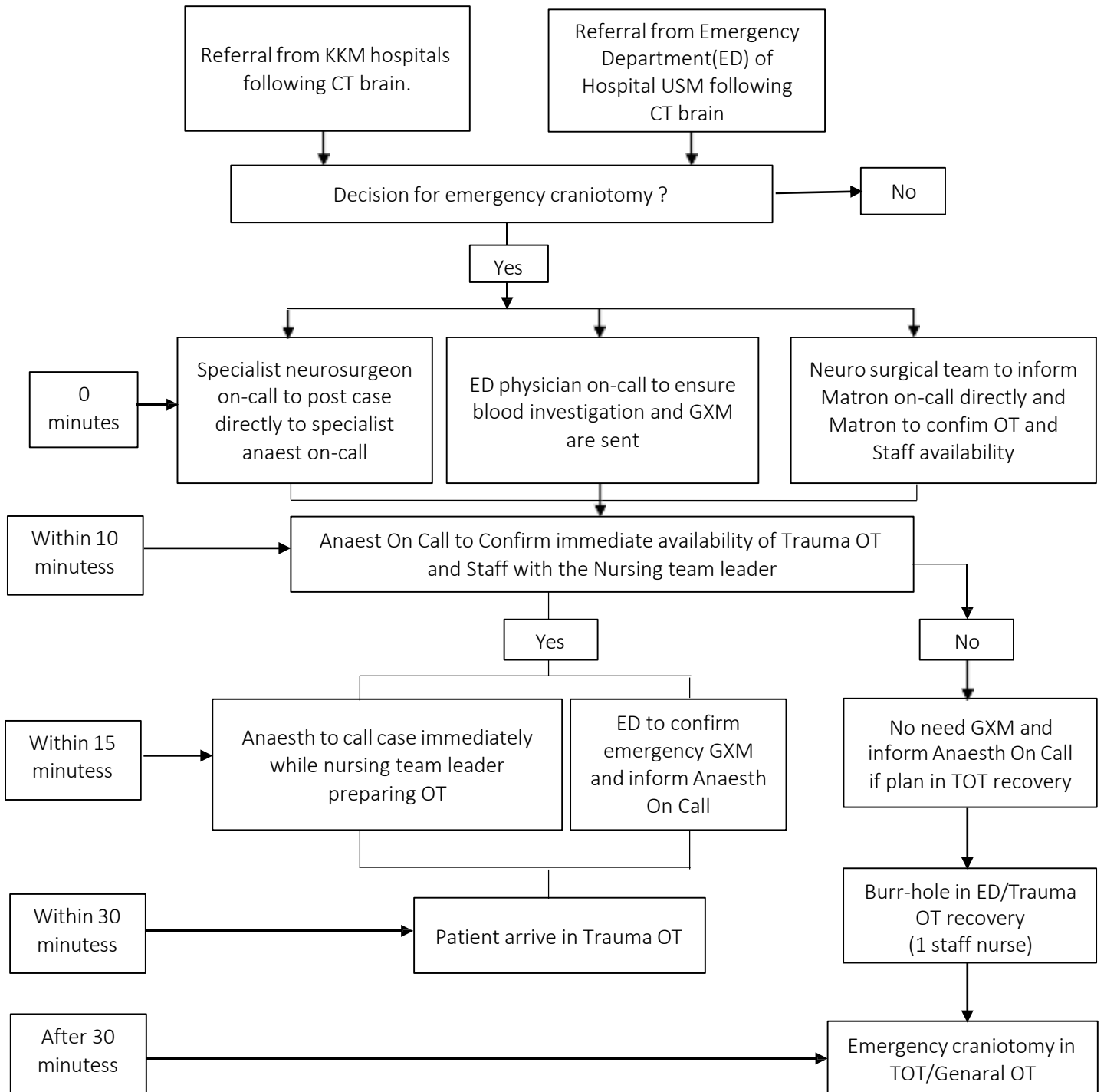




EMERGENCY CRANIOTOMY AND BURR-HOLE TREPHINATION FOR TRAUMATIC ACUTE EXTRADURAL AND SUBDURAL HAEMATOMA AT TRAUMA OT



*Blood bank requires:
 -15mins for emergency crossmatch
 -1hour for full crossmatch
 -presence of antibodies and suitable blood depends on a case-to-case basis
 *GXM not required for burrhole, but required for craniotomy/craniotomy.
 *Safe O blood can be transfused while awaiting for crossmatch to be ready.